



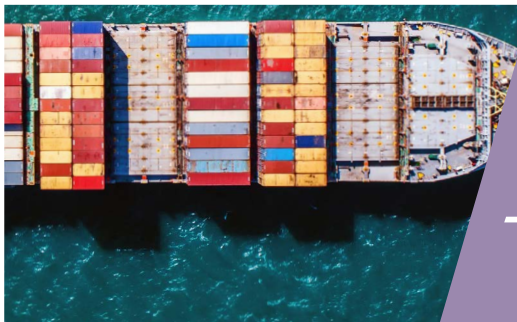
SHAMS GROUP
OF COMPANIES





- Multi modal Logistics service provider.
- Heavy Lift Specialist.
- ODC, OWC, Project Cargo.
- Equipment Leasing.
- Customs Clearance.
- One stop project Logistics Solutions.

- Owner and Operator of the Largest Inland Navigation Fleet in Bangladesh.
- Heavy lift, Break bulk, ODC, OWC specialized Barges.
- Commodity Carriers.
- Wide range of Cargo Vessels, Deck Loader Barge and Tugs.



- Shipping Agency
- Trading
- Local Agency and Country Representation



- Shipbuilding yard
- Docking and repairing facilities



- Freight Forwarding
- Third Party Logistics
- Warehouse Management
- Supply Chain Management

About us

From a humble beginning in 1978, Shams Group of Companies has become a pioneer and leader in the fields of Shipping and Logistics business in Bangladesh over the past 40 years. What started with one small office room with just one office staff, today Shams Group of Companies spans its wing across the whole country, having 5 companies, 6 branch offices and with almost 400 employees.

Under the visionary leadership of the Founder and Chairman, Alhaj H M Shamsuddin, Shams Group and its subsidiaries have become one of the most renowned Shipping and Logistics service providers in Bangladesh.



**ONE OF THE BIGGEST ASSETS BASED
MULTI MODAL LOGISTICS COMPANY IN BANGLADESH**

**OWNER AND OPERATOR OF
THE LARGEST INLAND NAVIGATION FLEET IN BANGLADESH**

**LARGEST WIDE RANGED HEAVY LIFT EQUIPMENT
LEASING COMPANY IN BANGLADESH**

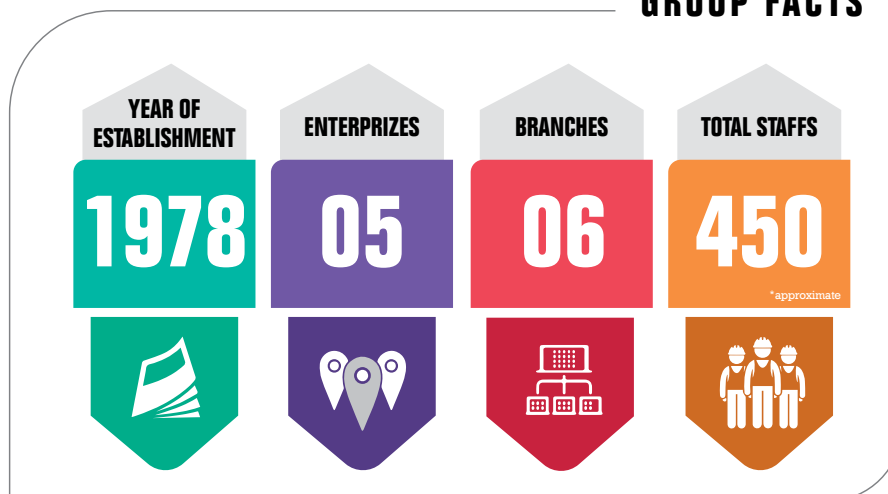
**ONE STOP SOLUTION PROVIDER FOR
ALL HEAVY LIFT AND PROJECT CARGO TRANSPORTATION**

**ONE OF THE OLDEST
CUSTOMS CLEARING AGENTS IN BANGLADESH**

**ONE OF THE MOST PROMINENT
SHIPPING AGENCY IN BANGLADESH**

**OVER 40 YEARS OF EXPERIENCE IN
THE SHIPPING & LOGISTICS INDUSTRY IN BANGLADESH**

GROUP FACTS



Chairman Speech

It gives me an immense pleasure to introduce Shams Group of Companies to you. Over the course of last 40 years, with the sacrifice and hardship of many, along with a strong will to excel, we have truly managed to turn ourselves from just a start up personal endeavor to an industry leader with impeccable reputation of service, commitment and excellence.

Our highly experienced and dedicated team members are always eager to render you the best of services and work closely for the successful completion of your project. With our wide ranged multi modal logistics solutions and shipping services, we work to create a winning partnership that will lay the foundation for a long and trusted mutually beneficial business relation.

To our new and prospective clientele, with a note of thanks to those who have worked with us in the past, I look forward to working with your next Shipping, Trading and Logistics project in Bangladesh.



H M Shamsuddin
Chairman



H M Rabiul Alam
Managing Director

Managing Director Speech

Bangladesh, with its rapidly growing economy, is fast becoming an important global destination of Shipping and Logistics movement. This immense appetite for growth and development has to be backed by industry experts who has skill, resource and vast working knowledge of local know how and this is where we are set to play a very important and crucial role.

Besides being an industry pioneer, what stands us apart from the rest is our ability to adapt to challenging conditions and respond to diversity and deliver on our promises. With an exciting yet challenging days ahead, here at Shams Group, we become even more committed in pursuance of our perfection of excellence while continue to serve our valued Clienteles in the same principle on which we founded our success upon, Trust, Integrity and Efficiency.

I take this opportunity to welcome you all and looking forward to work with as one-stop single source Solution Provider for all your Shipping & Logistics business in Bangladesh.



Multi modal Logistics Service Provider

With over 110 equipment of our own, MKK LOGISTICS is one of the biggest Asset Based Multi Modal Logistics Company in Bangladesh. Because we operate our own, we know the minute details of what it takes to get the job done.

In a developing country like Bangladesh, where infrastructure can leave you a lot to desire for, transportation of Heavy Lift Cargo can be a challenging prospect and poses a greater threat in completion of the job compared to a developed country with sound infrastructure. Choosing the right people with sound local know how and vast working experience is one of the most important factors to your success and this is where MKK LOGISTICS plays a crucial role and works as your key partner for the successful completion of your project.



Heavy Lift Specialist

Working with the intricate infrastructure of Bangladesh for over 40 years, MKK Logistics has the experience and self owned equipments to devise the best solution for transporting a large variety of heavy lift cargo. Our specialized equipments are purpose made for transportation of Over Dimension and Over Sized Project cargoes through roads, highways, waterways, or congested work zones using specialized trailers and other transport systems.

ODC, OWC, and Project Logistics Solutions

We specialize in providing a one stop solution for project logistics management and entire transportation of Heavy Lift, ODC, OWC and all project cargoes in all over Bangladesh.

- Feasibility study, Route survey and planning for the most efficient transportation method.
- Arranging clearance from related authorities.
- Multi-Modal transportation by Road / Rail / Barge etc. Specialized transportation of heavy consignments by hydraulic modular Axle, Low bed/high bed Trailers.
- Construction of temporary jetty at the river banks.
- Unloading of cargo from barge and onward transportation at the designated location of the site.

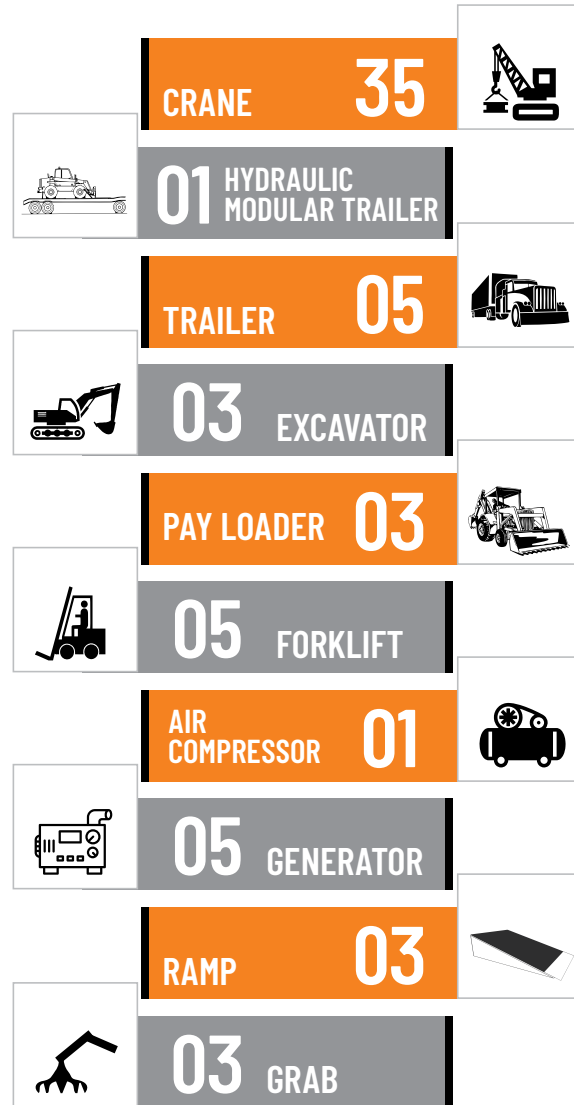




Equipment Leasing

With 110 equipment such as Cranes, Dump Trucks, Excavators, Pay Loaders, Deck Loader, Hatch Loader and Tugs, we take pride in being the single largest wide ranged multi modal Equipment Leasing Company in Bangladesh. With our skilled and experienced crewman and operator at service round the clock, our modern stock has the means to meet your needs for any type of project in Bangladesh.

EQUIPMENTS



Customs Clearance

Here at MKK Logistics, with over 40 years of experience in Customs Clearing, we have been a trusted name in brokerage and Consultancy, operating with our own license since 1978 in all the major Customs point in Bangladesh. We have our own dedicated team in • Chittagong and Mongla Seaport, • Dhaka and Chittagong International Airport, • Dhaka ICD Railway station and in • Benapole, the land border in Bangladesh, adjacent to India.

We can provide you a comprehensive Customs Clearing solutions including:

- Preparation of Documents
- Online Submission
- Re exportable Items
- Assessment of HS Code
- Import Permit
- Any customs clearing issue regarding project management
- Tax and VAT Calculation
- Bank Guarantee



TLN THREE LIGHT NAVIGATION

Largest Inland Marine Fleet in Bangladesh

Three Light Navigation is the owner and operator of the largest inland navigation fleet in Bangladesh. With over 55 vessels in our fleet, we provide a strategic mix of wide ranged Deck Loader Barges, Tugs and conventional Hatch Loader Vessels; along with exceptional local expertise to deliver a comprehensive, single-source inland marine transportation solution.

Our purpose-built Deck Loader vessels are specially suited for carrying of Heavy Lift, ODC and OWC cargo in all over Bangladesh.

FLEET

TUG	10
DECK LOADER BARGE	29
CARGO VESSEL	14
ANCHOR BOAT	02

Superior Fleet

Three Light Navigation provides some of the country's newest, safest and wide ranged vessels to ensure our customers' cargos are delivered safely, reliably and cost-efficiently.

Our Tugboat MT LIGHT-1 with 1800 BHP and Deck Loader "TLN-41" with a capacity of 2800 MT, are one of the biggest of its kind that the country has to offer.

All vessels in our fleet are local authority's regulation and compliance certified and are equipped with the latest communications and safety equipment such as GPS, VHF, Echo sounder and piloted by certified, most experienced marine transportation professionals who knows the intricate rivers of Bangladesh like the palm of their hand.

Besides Heavy Lift and project cargoes, TLN also have specialized conventional hatch loaders to transport commodities and aggregates to all over Bangladesh.





Shipping Agency

Here at Sun Shine Business Ltd, we have one of the most trusted, renowned and prominent Port Agency service in the country, operating with our own license in both Chittagong and Mongla Port. Our well trained and experienced agency personnel will provide you and your vessel with the best possible service, 24/7, 365. From pre-arrival to post-departure, our personnel pay special attention to details in ensuring accurate, speedy and smooth communication in handling overall disbursement control.

We represent some of the biggest names of Ship Owners and Charterers around the world and regularly handling vessels and cargoes of all sorts in both the Chittagong and Mongla Port.

Our Full range Shipping Agency services includes:

Our Service Includes

- Port Agency
- Crew Husbandry
- Supply Of Provisions
- Arrange For Bunker Supply
- Cash To Master
- Waster Disposal
- Medical Attendance

Why us?

- Over 30 years of experience
- Regularly updated and status report
- Quick Reply
- Close liaison with the local Port Authorities
- Onsite personnel ready to handle any kind of situation
- Membership to various trade bodies such as DCCI, SCB, C&FA, ICV04
- High standard of communication and service assured
- Round the clock personnel on-duty including
- Government and Public holidays.

Trading

Sun Shine Business Ltd is dedicated to the international trade business consultancy, having years of strong experience offering representation services, sourcing services, entry market plans, sales agent's services for foreign companies that intend to extend their operations and sales in Bangladesh.

We can provide the following service:

- Local Agency
- Country Representation
- Import/Export Consultancy
- Dealership/ Sales Agent
- Indenting



We have vertically expanded our business operation in our pursuit to provide the complete solution to our customers. Already being one of the biggest owner operators of inland vessels, we have firsthand experience in the docking and repairing of vessels and now putting our expertise in service for the benefit of other.

- Shipbuilding, docking and repairing facilities.
- Quotation & shipyard space
- Technical support
- Time schedule
- Ship attending

Commitment to occupational Health and Safety

For all our diverse range of services and operations, we take our occupational health and safety policies very seriously. Not only it is essential for our employees, but is also increasingly important for our customers and other stakeholders. We have implemented an Occupational Health and Safety Management System as a fundamental part of our risk management strategy not only to address the obligations of our International Clientele, but also to prepare ourselves to the changing legislation and protect the workforce and other persons working under our control.

Syneritics

Syneritics is the winning combination of two words, Synergy and Logistics, and that is exactly what we thrive to serve. We want to add value for our customers by providing smart and intel-ligent solution where the return on their investment, both time and money, will increase more than the norms.

We want to build an 360 logistics solutions model that would allow customers to outsource their entire logistics and transportation requirements to us.

Our services includes :

- Freight Forwarding
- Third Party Logistics
- Supply Chain Management
- Warehouse





300 MT CRANE



HMT



230 MT CRANE



80 MT CRANE



50 MT CRANE



PAY LOADER



150 MT CRANE



250 MT CRANE



170 MT CRANE



2000 MT CARGO VESSEL (MCK-1)



DACK BARGE (TLN-6)



MV TLN - 22



BARGE (TLN-35)



TUG (M.T.LIGHT-1)



TUG (M.T.LIGHT-9)



BARGE (TLN-32)





OUR CLIENTS





Shams Bhaban

17, Shiddeswari Lane, Dhaka-1217, Bangladesh

Tel : +88-02-8313706, 9330948

Fax : +88-02-8314983

E-mail : info@shamsgc.com.bd, shamsbd@citech.net

www.shamsgc.com.bd

Branches:

Chattogram | Mongla | Khulna | Benapole | Narayanganj